



Edmonton Transit Service Presentation Electric Railroaders Association

September 2024
Presented by:
Trevor Dennehy, Director, LRT Operations
& Maintenance

Overview

LRT Network

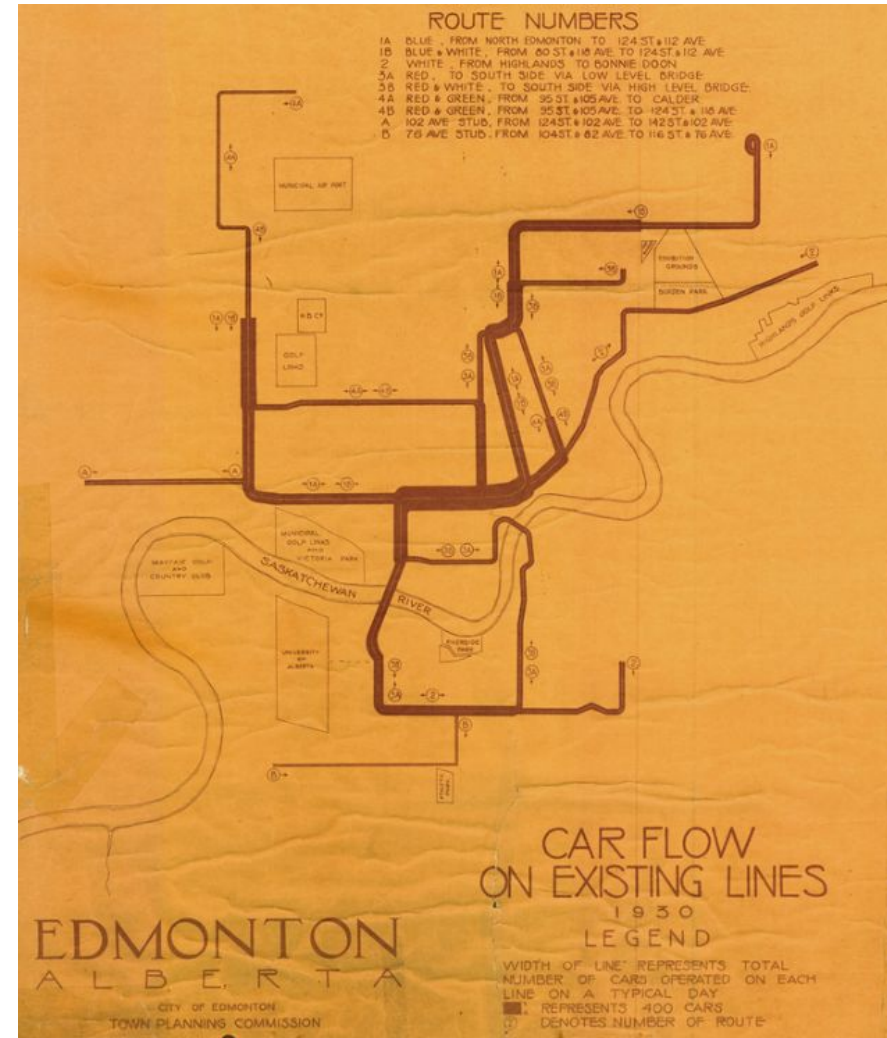
- Past
- Present
- Future



The past - before the current LRT system

Streetcar System

- At its peak there were over 80 streetcars and over 90 kilometres of track!
- 14.1 Million rides in 1929
- The great depression, City financial troubles and deferred maintenance saw the replacement of street car system.



The past - Before the current LRT system

Streetcar System - Edmonton Radial Railway

- 1979 - A restored car #1 travelled across the High Level Bridge to celebrate the city's 75th anniversary
- The Edmonton Radial Railway Society (ERRS) was formed in 1980
- Streetcar service started at Fort Edmonton Park in 1984
- High Level Bridge streetcar service started in 1997



The past - Before the current LRT System

- Streetcar #1 is still in service today and is comprised of original materials.
- In 2008 the ERRS was recognized as a museum
- Run by over 150 volunteers



The history of the LRT network

- Construction began in 1974
- Regular service started in 1978
- Expansion to Clareview in 1981
- Expansion to Corona in 1983
- Expansion to Government Centre in 1989



The history of the LRT network

- Expansion to University in 1994
- Expansion to Health Sciences in 2006
- Expansion to South Campus in 2009
- Expansion to Century Park in 2010
- Metro Line construction in 2015 to NAIT
- Metro Line extension in 2024 to Blatchford



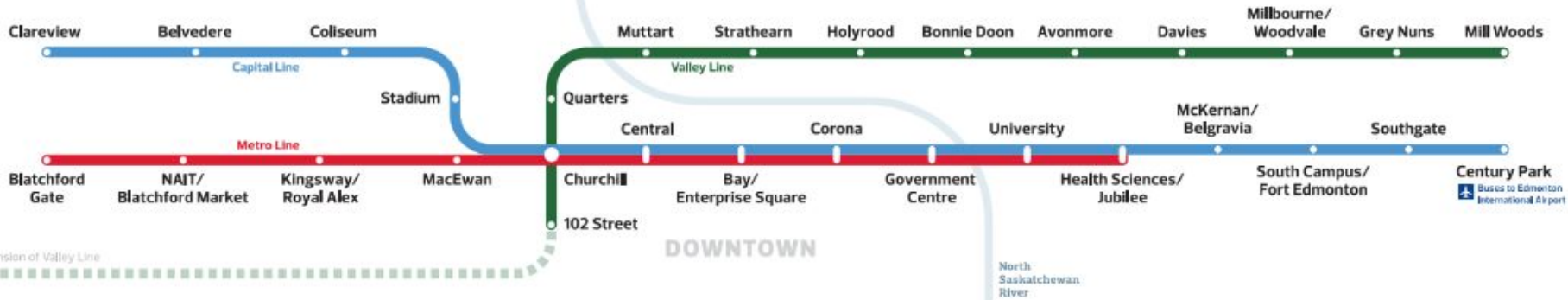
The history of the LRT network

Valley Line

- Construction started in 2016
- Went into service in November of 2023
- 13 km
- 12 Stops
- P3 project, first of its kind in Edmonton

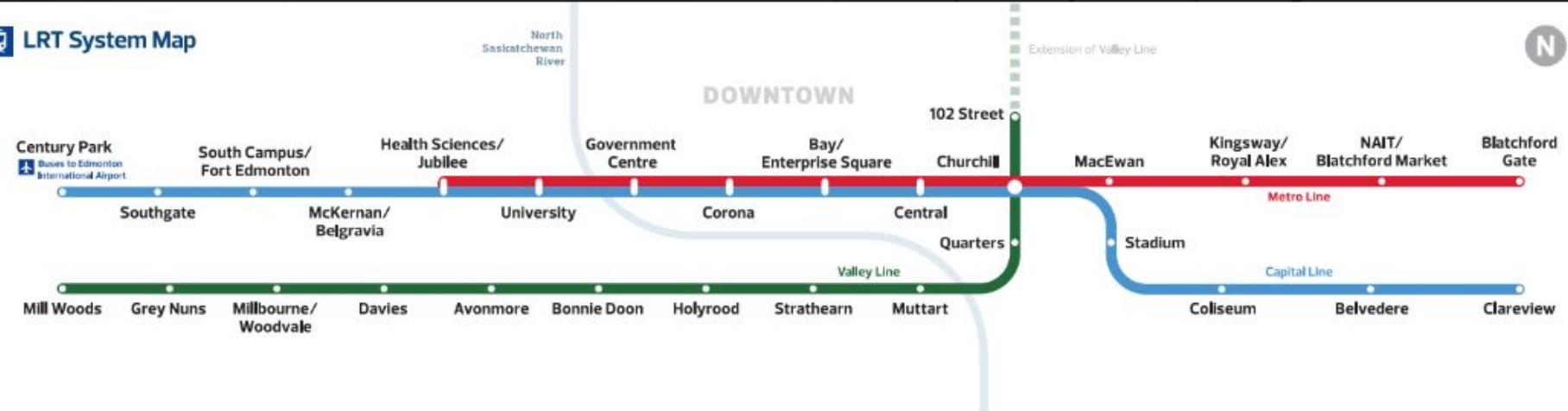


LRT System Map



Marvin, Wasiu, Eric 3 inbox Action requested/updated system maps along LRT - Hello all, Sarah

LRT System Map



Current LRT system vehicles

- 94 Vehicles total (Siemens U2s and Siemens SD160s)
- Actively working to replace the U2s
- Currently operate up to 5 cars in length
- Max capacity of 700 per train
- 26 Valley Line Bombardier / Alstom Flexity Cars
- 275 people per car, 2 car trains



Current LRT system facilities

- 18 facilities for the high floor network
- Mix of at grade and below grade stations
- 12 stops for the lower floor Valley Line network
- 1 elevated station



Current boardings and utilization numbers

- Pre 2020 daily boardings 115,000 per day
- Current boardings are 75,000 and increasing since 2020.
- Daily bus boardings are 234,000
- Valley Line daily boardings are 15,000



Future Expansion - Valley Line West

- Broke ground in May 2022
- 14 km extension from Downtown to Lewis Farms
- 14 at grade stops
- 2 elevated stations
- Expansion of Gerry Wright Operation and Maintenance Facility
- \$2.6B Budget
- Additional 46 LRVs



Future Expansion - Valley Line West

- In July 2024 streetcar ties and spikes were discovered on the construction site of the Valley Line West
- This is the first instance of a modern LRT line being overlaid on top of a streetcar line in Edmonton.
- While rails and ties have been unearthed in Edmonton, these are the first spikes recovered



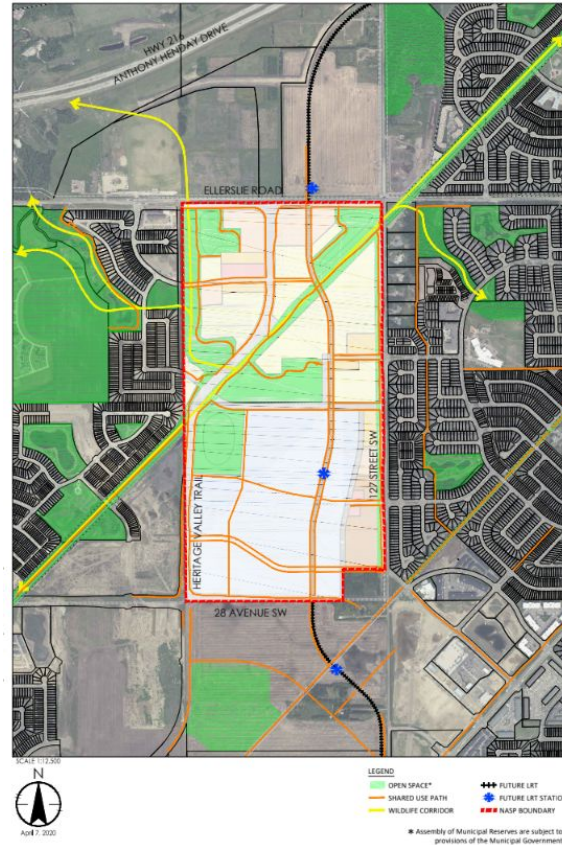
Future Expansion - Capital South

- Construction started in 2023
- 4.5 km
- 2 Stations and 1 new OMF
- \$1.2 B
- Planned Completion date of 2028



Future Expansion - Capital Line South to Allard

- 3.2 km
- 3 potential new Stations (Provincial Lands Station, Heritage Valley Town Centre Station and Desrochers Station).
- Approximately \$300 Million.



Future Expansion - Metro North to Campbell Road

- 9.4 kms from Blatchford to Campbell Road
- 7 new stations
- Approximately \$2 billion (in 2020\$)





Questions?